

# Subsurface Investigation Opportunities Include: Environmental Investigations, Geotechnical, Mineral Exploration & Other Services

Bowser-Morner's Subsurface Investigation Department has served individuals, commercial/industrial concerns, and governmental agencies throughout the United States for more than 50 years.

Whatever the application, truck-, trailer-, ATV-, and skid-mounted auger, rotary, cable tool, and Sonic rigs, of varying design, offer the flexibility to perform efficiently in a wide variety of terrain under varying subsurface conditions.

- Environmental Investigations
- Geotechnical Investigations
- Aggregate and Mineral Explorations
- Overburden Sampling
- Bedrock Core Sampling
- Water Supply Investigations

We have been actively involved in subsurface investigation services for environmental sites for more than 20 years, including federal program facilities, CERCLA, RCRA landfills, UST sites, and a host of other types of facilities. During that time, environmental applications have constituted 60% to 75% of our workload.

Bowser-Morner stresses safety in all of its employees' endeavors.

From our facilities to the work site and in between, safety is strongly emphasized. Regular meetings, incentives, and awards are used to promote safe practices with minimal effects to efficient production in an occupation exposed to a certain degree of risk.



Bowser-Morner's Versa-Sonic K-50s are well suited for a variety of applications.

A Sonic drill is a machine that uses high-frequency mechanical oscillations developed in the special head to transmit resonant vibrations and rotary power through the tooling to the drill bit, allowing it to achieve exceptional penetration rates in most formations without the need for fluids or air to effectively take overburden core samples.

One of the main advantages of Sonic Technology is its superior ability to produce continuous core samples of both unconsolidated and consolidated formations with significant detail and accuracy. Recovery of a sample is as consistently close to 100% as any methodology.



Other advantages of the Sonic Rig are:

- Speed
- Efficiency
- Superior Sampling Procedure
- Depth Capacity
- Safety
- Reduction of Cuttings and Fluids

The versatility of Sonic technology makes it a cost effective and productive way of boring, sampling, and installing wells and instrumentation.

For further information about our services, please visit our website at [www.bowser-morner.com](http://www.bowser-morner.com) or email us at [sales@bowser-morner.com](mailto:sales@bowser-morner.com). We will be glad to assist you with your subsurface investigation needs.

[www.bowser-morner.com](http://www.bowser-morner.com)

Bowser-Morner offers a variety of procedures.

- 4", 6", and 8" Sonic Tooling
- Hollow Stem Auger (HSA)
- Air and/or Mud Rotary Boring
- Driving Steel Casing (Cable Tool)
- Standard Penetration Tests
- Piston-type Sampling
- Field Permeability Testing
- Dutch Cone Penetration
- NX and HQ Wireline Rock Coring
- Percolation Tests
- Vane Shear Tests
- Conventional Rock Coring
- Hydro-Punch II
- 5' Continuous Sampler - HSA
- Dual Rotary Drilling
- Installation of Groundwater Monitoring Devices
- Directional Drilling
- Soil Probe (AMS) DPT

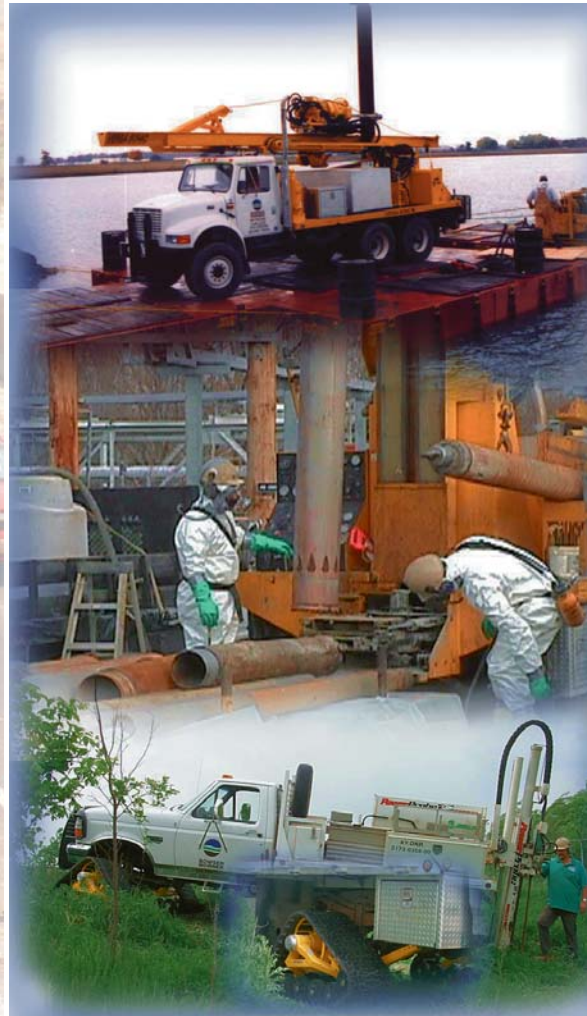
50+ Years  
Experience



**BOWSER  
MORNER**®

Tim Augustine  
Department Manager  
937-236-8805 Ext. 273  
taugustine@bowser-morner.com

4518 Taylorsville Road  
Dayton, OH 45424

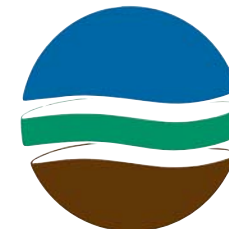


www.bowser-morner.com

Conventional and  
Sonic Technology



Subsurface  
Exploration  
Services



**BOWSER  
MORNER**®  
COMMITTED TO EXCELLENCE  
SINCE 1911