



REPORT

Read All About It

Safety in our Numbers
page 1

SEM to 100,000x
page 2

Engineering Results
page 3

Subscribe!
page 3

Transportation Moves
page 4

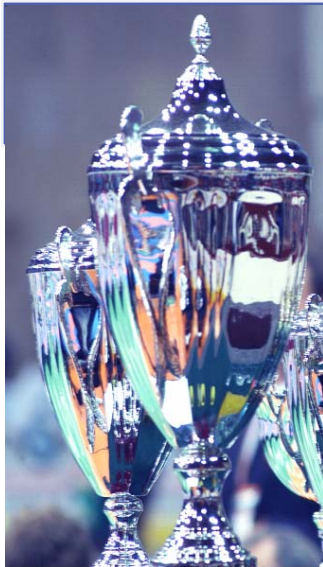
Where You'll Find Us

Bowser-Morner
Dayton, OH
P.O. Box 51
Dayton, OH 45401
Phone: 937.236.8805
Fax: 937.233.2016
www.bowser-morner.com

Toledo, OH
P.O. Box 838
Toledo, OH 43697
Phone: 419.691.4800
Fax: 419.691.4805
www.bowser-morner.com

Lexington, KY
2416-B Over Drive
Lexington, KY 40511
Phone: 859.233.0250
Fax: 859.233.0183
www.bowser-morner.com

Springfield, IL
226 West Highland
Springfield, IL 62704
Phone: 217.622.8865
Fax: 217.744.7625
www.bowser-morner.com



Safety in Our Numbers

At Bowser-Morner, we take safety seriously every day, every year, for the good of our employees and for the peace of mind of our clients. **This commitment to safety is why we are so proud to have set our all-time best safety record in 2006! In addition to having the fewest number of recordable incidents in a year ever, we also had the lowest number of incidents per 200,000 hours worked in 2006 as well.** We could not be

prouder of our employees, and we're glad to share this success with our clients who also are so dedicated to safety.

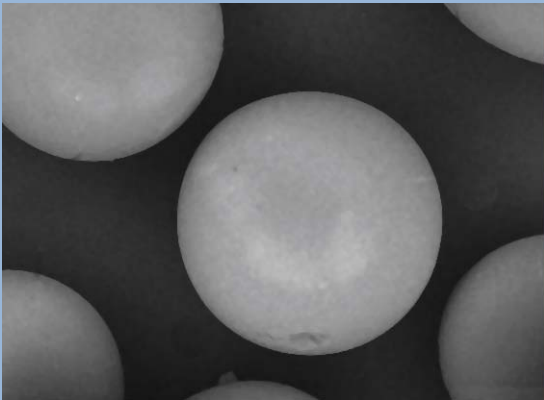
As part of our safety efforts, our program includes many aspects designed to continually improve safety. Those items include:

- Our comprehensive Motor Vehicle Safety program that has substantially reduced our vehicle accident frequency.
- A consulting medical director for pre-employment physicals, medical surveillance programs, and on-site nursing services.
- Our Drug- and Alcohol-Free Workplace policy and program.
- Our full-time Safety and Facilities Manager, who develops health and safety programs and plans, monitors operations, and trains supervisors and staff.
- A detailed Chemical Hygiene Plan addressing the numerous issues related to chemical testing laboratories including handling, storage, personnel training, and emergency procedures, along with our environmental site-safety program.
- A program ensuring the completion of the 40-hour OSHA safety training and annual eight-hour refresher training for our crews on environmental sites. This training includes many specific Bowser-Morner requirements.
- Completion of the National Safety Council's Defensive Driving Course by many of our company drivers, training of staff members in first aid, and our comprehensive Health and Safety Manual to communicate our philosophy and procedures to all of our employees.

(CONTINUED ON PAGE 4)

Our Newest Scanning Electron Microscope: To 100,000x and Beyond

The world of photography changes at the speed of, well, a flash. Everyone wants the latest digital, high-megapixel cameras for instant color images that can be printed on high-definition photo printers with professional results. In terms of high-quality definition, of course, Scanning Electron Microscopes (SEMs) like those at Bowser-Morner are “cameras” that produce photographs of what lies beneath, in unmatched quality.



Polymeric ion exchange resin beads like those found in water-softener tablets, as photographed by our newest SEM, at 85x.

For the past few years, our clients have come to rely on the extremely detailed photographs provided by our Aspex SEM, which produces images at a magnification level of up to 4,000 times. **Now, for our clients**

who need even more magnification, we are proud to offer photographs at the 100,000-times magnification level (and even higher!) with our new Jeol scanning electron microscope system. This Jeol system features the same excellent Energy Dispersive X-Ray (EDAX), semi-quantitative, analysis backscatter system as our Aspex SEM system does. As a result, Bowser-Morner’s clients receive the benefits of improved technology and our doubled capacity to perform analyses. Our clients also will



Our newest SEM, set up and ready to provide the details you need for your next project.

be pleased to know that **Lori Goodpaster**, who has produced so many good images with our original SEM for years, has achieved stellar results with our newest, more powerful SEM after successfully competing the training in record time.

If you’re not already using SEMs for your projects, you may wonder how this technology can help our clients. Some of the most-requested applications for our SEMs involve forensics (“Why did that part fail?” “What made that paint crack?”), checking the cleanliness of metal and other materials, evaluating concrete, analyzing fibers such as in paper, researching biomaterials and other substances, and determining the sizes of particles.

In addition, while these SEMs give the exceptional detail of the scanning electron microscopes used in research and university laboratories, they provide fast, reliable analytical results at cost-effective prices. As a result, our SEMs can handle your imaging and X-ray microanalysis needs while the units’ sophisticated Energy Dispersive X-Ray technology allows us to semi-quantitate the elemental composition of almost any substance or particle. Our SEMs can also meet many other client-specific needs. **To find out how we can help you, call Mike Liberty at (937) 236-8805, Ext. 256, or email Mike at miliberty@bowser-morner.com.** He’ll be happy to show you all the details you never even imagined in your sample.

A Message from Steve Bowser

As President of Bowser-Morner, I’m proud that we’ve been serving you, our valued clients, with the same strong commitment to excellence since 1911.



If you have any questions, comments, or suggestions about how we can better serve you, please feel free to email me at sbowser@bowser-morner.com or call me at 937.236.8805, Ext. 202. Thank you!

ENGINEERING YOUR PROJECTS: CHRIS RYAN

It's the career Chris Ryan has always wanted and planned for: helping clients with their civil engineering projects. As a geotechnical engineer with Bowser-Morner's Engineering Services Department in the company's Dayton office during the last three years, **Chris Ryan** says he enjoys his work every day from the calculations to the on-site visits to the report writing and the client contacts.


One of Chris's favorite aspects is having the chance to learn from other Bowser-Morner engineers. As Chris says, **"Having the opportunity to learn from such capable and experienced engineers as those here at Bowser-Morner, who have seen about every kind of project and situation around, is extremely valuable. And I know our clients appreciate the expertise of these engineers even more than I do."**

With a bachelor's degree in Civil Engineering from West Virginia University and a master's degree in Civil Engineering with a specialty in Geotechnical Engineering from West Virginia University as well, Chris puts his education and his experience as an engineering research assistant and as an engineering intern for the West Virginia Department of Highways to good use for Bowser-Morner and especially our clients.

Chris Ryan's role here at Bowser-Morner centers on serving our clients through his position as a project engineer for jobs including subsurface studies for interstate highways, bridges, sewer lines, above- and below-grade tanks, landslides, and various types of building foundations. Also as part of his work, Chris prepares design and specifications for retaining structures, long-span pipes and culverts, pavements, and various foundations. In addition, Chris specifies testing programs, evaluates tests performed, and prepares reports for various projects. When he's not



working, Chris likes to watch (and sometimes play) all kinds of sports. He also likes to work out and visit friends and family.

If you want to reach Chris, just give him a call at (937) 236-8805, Ext. 283, email Chris at cryan@bowser-morner.com, or send him a fax at (937) 233-2016. No matter how busy Chris is, he's always happy to take the time to help a client or coworker. As Chris says, "That's the Bowser-Morner way." We couldn't agree more. 

Subscribe!

Signing up is easy.

Go to our web site at www.bowser-morner.com.
Select the "Subscribe" button at the top of the page.
Press "Send."
That's it!

It's our e-newsletter.

It's free.

It's informative.

It's designed for you.

www.bowser-morner.com

We're a country on the move, and Ohio is no exception. In the Ohio Department of Transportation's (ODOT's) Business Plan for 2006-2007, as outlined on ODOT's web site (<http://www.dot.state.oh.us/BusinessPlan0607>), ODOT notes that "It has been 101 years since the General Assembly created Ohio's "State Highway Department" with four employees and a \$10,000 annual budget. From those modest beginnings, the department has grown to construct and maintain the 10th largest road system in the nation."

Through the Transportation Review Advisory Council (TRAC), ODOT has helped finance the Euclid Corridor in Cleveland, the Central Ohio Transit Authority light rail initiative in Columbus, and the Eastern Corridor transit improvement projects in the Cincinnati area. As ODOT notes, the Jobs and Progress Plan helps improve conditions on the state's most congested freeways while the Jobs and Progress Plan works to improve transportation routes in rural areas, such as the U.S. Route 24 corridor in northwest Ohio.

These transportation projects require the skills and expertise of many different companies, from start to finish. At Bowser-Morner, we're proud to offer services to help our clients on all their transportation projects. Our experienced personnel have planned, supervised, and performed hundreds of engineering studies for transportation projects such as roadway improvements, bridge replacements, railroad grade separations, embankments over soft ground, and major interchange and corridor improvements. We also plan and oversee subsurface investigations for bridges, roadways, railways, airports, marinas, and pavement evaluations for federal, state, county, municipal, and township transportation systems. Recent major ODOT highway projects Bowser-Morner has worked on include geotechnical studies for the I-70/I-75 interchange project in Montgomery County, the Liscum Drive improvements in Dayton, a bridge replacement project in Cedarville, Ohio, a Phase III improvement of County Road 25A in Miami County, the Trotwood/SR 49 Connector in Montgomery County, Ohio, the State Route 35 and North Fairfield Road interchange, the U.S. 24 widening and improvement project, testing and geotechnical consulting for the I-280 Veterans Glass City Skyway bridge replacement, and geotechnical design studies for the I-280 widening project including highway and railroad bridge foundations, sound walls, and retaining walls. In addition, our Field Services personnel have conducted construction observation and testing services for airport terminals, runways, and taxiway expansions and improvements; bridge replacements for ODOT; road and highway construction projects for cities and counties; and parking garages.

Our teams of engineers and technicians are ready to help you on your next transportation project, too. Just give us a call! In Dayton, call Dr. Richard Tseng at (937) 236-8805, Ext. 279 for engineering services or Dennis Ream at Ext. 216 for field services assistance. In Toledo, call Dick Hoppenjans at (419) 691-4800, Ext. 228, for engineering services and Rick Allen at Ext. 243. We're ready to be on the move with you and your project.



Our teams of engineers and technicians are ready to help you on your next transportation project, too. Just give us a call! In Dayton, call Dr. Richard Tseng at (937) 236-8805, Ext. 279 for engineering services or Dennis Ream at Ext. 216 for field services assistance. In Toledo, call Dick Hoppenjans at (419) 691-4800, Ext. 228, for engineering services and Rick Allen at Ext. 243. We're ready to be on the move with you and your project.



(Safety in Our Numbers, Continued)

- An education program that incorporates monthly safety updates and reminders, as well as required monthly safety meetings for each department. Employees learn about safety factors, and watch informative videos combined with presenters and speakers.
- Our Safety Committee that meets each month to discuss safety and to plan new efforts, and our monthly employee newsletter that focuses on our safety performance and addresses any safety issues that will help our employees stay safe.

Together with the efforts of our dedicated employees, these safety initiatives have helped Bowser-Morner continually improve on our safety record. Just as we always do our best for our clients, we will continue to work to make each year a record-setting milestone in safety. If you have any questions about our safety record or performance, please call Henry Butcher, our Safety and Facilities Manager, at (937) 236.8805, Ext. 276. He'll be glad to talk with you.

